

est 1979

 Jeremy  
Leaf & Co.



## 43 Stokes Court, Diploma Avenue, N2 8NX

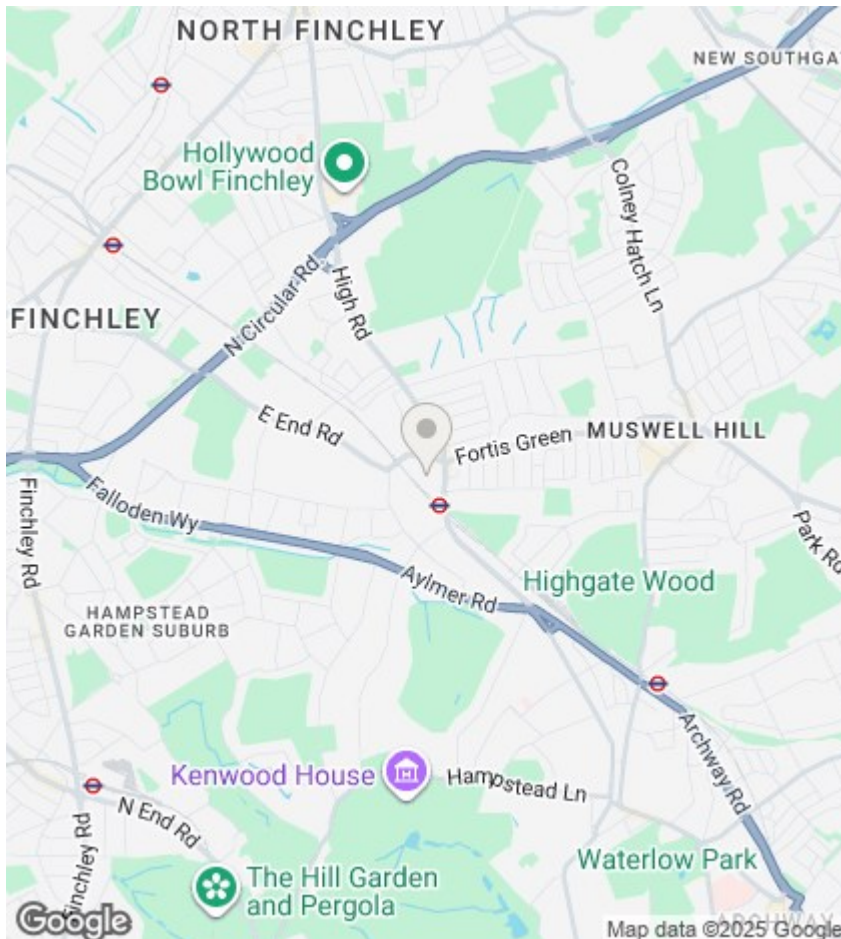
£199,000

- Communal Gardens
- 153 Years Lease
- Large Storage Cupboard
- One Double Bedroom
- 24 Hour Warden Assisted
- New Electrical Installation Certificate
- Chain Free
- New Fire Door

98 High Road, London, N2 9EB  
020 8444 5222

[eastfinchley@jeremyleaf.co.uk](mailto:eastfinchley@jeremyleaf.co.uk)  
<https://www.jeremyleaf.co.uk/>





## Directions

## Viewings

Viewings by arrangement only. Call 020 8444 5222 to make an appointment.

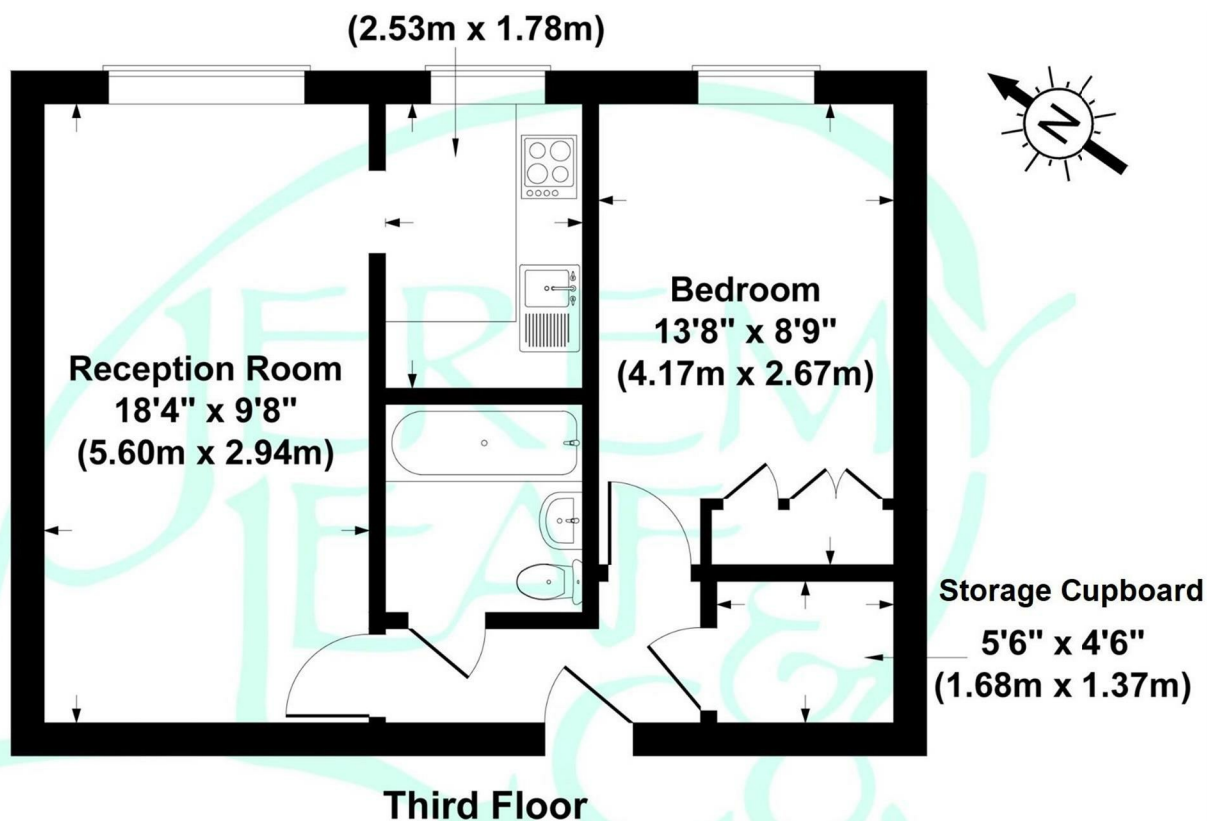
## Council Tax Band:

C

## EPC Rating:

C

Energy Efficiency Rating		
	Current	Potential
Very energy efficient - lower running costs		
(92 plus) A		
(81-91) B		
(69-80) C	77	81
(55-68) D		
(39-54) E		
(21-38) F		
(1-20) G		
Not energy efficient - higher running costs		
England & Wales	EU Directive 2002/91/EC	



**Third Floor**  
**Stokes Court, London, N2**  
**Gross Internal Area 463 sq ft / 43 sq metres**